

ABOUT BUPRENORPHINE

Buprenorphine (also called Suboxone®

is medicine for people who have chronic pain or addiction to opioids (heroin or pain pills).

Buprenorphine helps get rid of cravings and withdrawal, without making you feel high.



People live longer and have fewer overdoses when they take buprenorphine.

Taking buprenorphine is not substituting one drug for another— it is a medicine that you may need to stay healthy.

HOW TO TAKE BUPRENORPHINE

Buprenorphine or Suboxone, whether the pill or film, must be dissolved under the tongue for 10 minutes.



DO NOT SWALLOW OR CHEW the buprenorphine, because it will not work.

You should start to feel the effects of the buprenorphine within 30 minutes

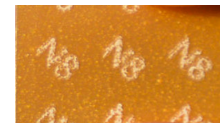
BUPRENORPHINE DOSING

**Day after ED visit
Until Follow Up**

**TAKE 2 FULL FILMS (16 MG)
DAILY**



+



SAFE HANDLING

Buprenorphine-containing products can be harmful to children not only when a whole tablet or film is swallowed, but also when they are licked or placed in the mouth.

- Keep medication out of sight and out of reach of children.
- Use a locked box, bag, or cabinet for safe storage of medication.
- Always keep medication in its original, labeled prescription container, with child-resistant closure when appropriate.
- Do not place tablets or films on counters, sinks, dressers, or nightstands for later use.

SAFE HANDLING

- Discard used film wrapping immediately by folding the package together, placing it in the trash, and securing the trash. Buprenorphine bottles and film wrapping can contain enough leftover medicine to cause problems for young children.
- Do not store medication in your pocket, bag, purse, backpack, or other carrying case.
- Avoid leaving medication in the bathroom, car, or any publicly accessible space.

QUESTIONS

If you have any questions about how to take buprenorphine, or believe you are still feeling cravings to use heroin or other opioids or are experiencing withdrawal symptoms, please call or return to the emergency department.