

ABOUT BUPRENORPHINE

Buprenorphine (also called Suboxone®) is medicine for people who have chronic pain or addiction to opioids (heroin or pain pills).

Buprenorphine helps get rid of cravings and withdrawal, without making you feel high.



People live longer and have fewer overdoses when they take buprenorphine.

Taking buprenorphine is not substituting one drug for another— it is a medicine that you may need to stay healthy.

HOW TO TAKE BUPRENORPHINE

Buprenorphine or Suboxone, whether the pill or film, must be dissolved under the tongue for 10 minutes.



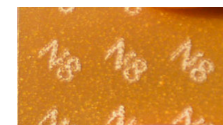
DO NOT SWALLOW OR CHEW the buprenorphine, because it will not work.

You should start to feel the effects of the buprenorphine within 30 minutes

HOW TO TAKE BUPRENORPHINE

You were given Buprenorphine (Suboxone) in the Emergency Department. Please follow the instructions below.

IN THE EMERGENCY DEPARTMENT YOU WERE GIVEN 8 MG OF BUPRENORPHINE



8 mg is one film

Day 2

(Day after ED visit)

STEP 1



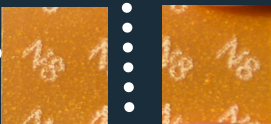
Take one film (8 mg) and wait 4 hours

STEP 2

Feel better? Good! You're done for today. Your dose was 8 mg. If you still feel sick after 4 hours go to step 3.

STEP 3

Cut the film in half



STEP 4



This half is 4 mg. Put this under your tongue. Your total dose was 12 mg.

Day 3

Until Follow Up

**TAKE 2 FULL FILMS (16 MG)
DAILY**



+



Questions

If you have any questions about how to take buprenorphine, or believe you are still feeling cravings to use heroin or other opioids or are experiencing withdrawal symptoms, please call or return to the emergency department.